

Legacy Way in-tunnel air quality

Monthly trend report – May 2018

The table below sets out the in-tunnel air quality criteria for the Legacy Way tunnel as set out in the Environmental Authority (EPPR02587314).

- For the month of May 2018 no notable trends have emerged.

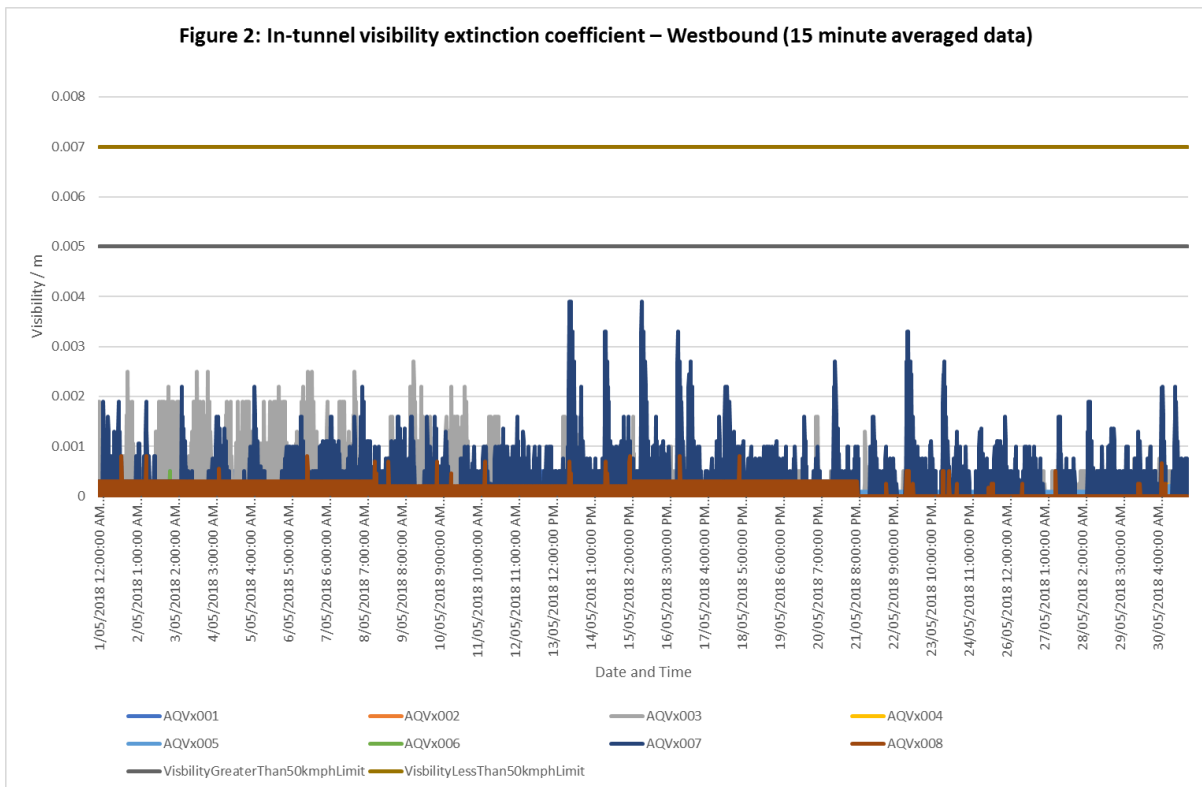
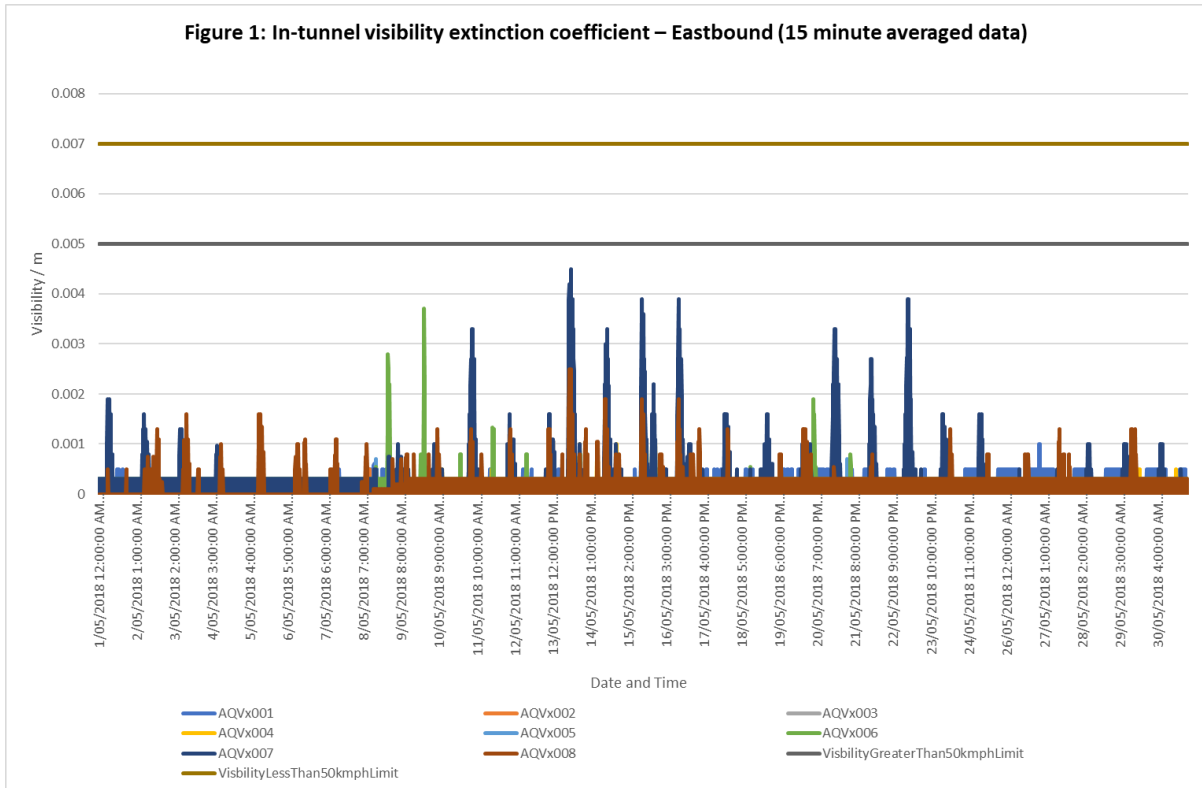
Table 1: In-tunnel air quality criteria

| Parameter | Criteria |
|-------------------------------------|----------------------------------------------------------------------------------------------------------|
| Carbon monoxide (CO) | 70 ppm generally 90 ppm in peak traffic congestion |
| Nitrogen dioxide (NO ₂) | 1 ppm (average) |
| Visibility coefficient (K) | 0.005 m ⁻¹ for free flowing traffic (greater than 50km/hr) 0.007 m ⁻¹ otherwise |

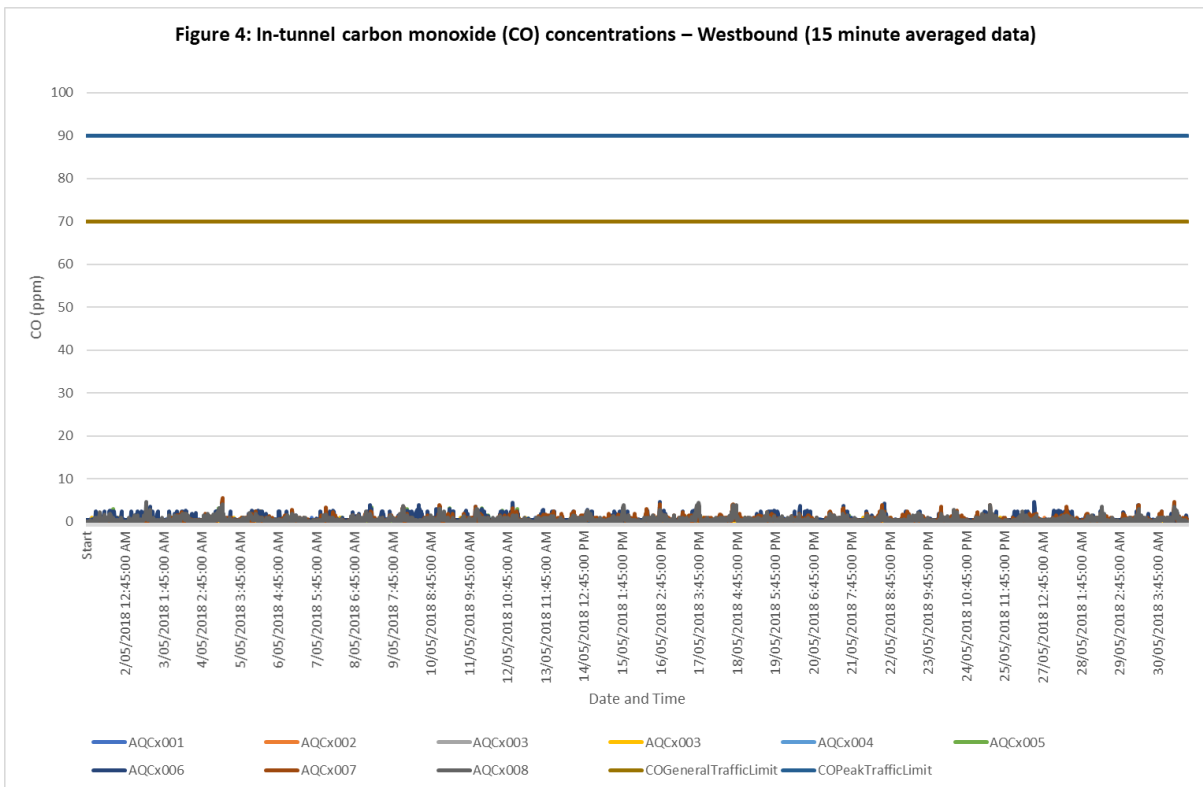
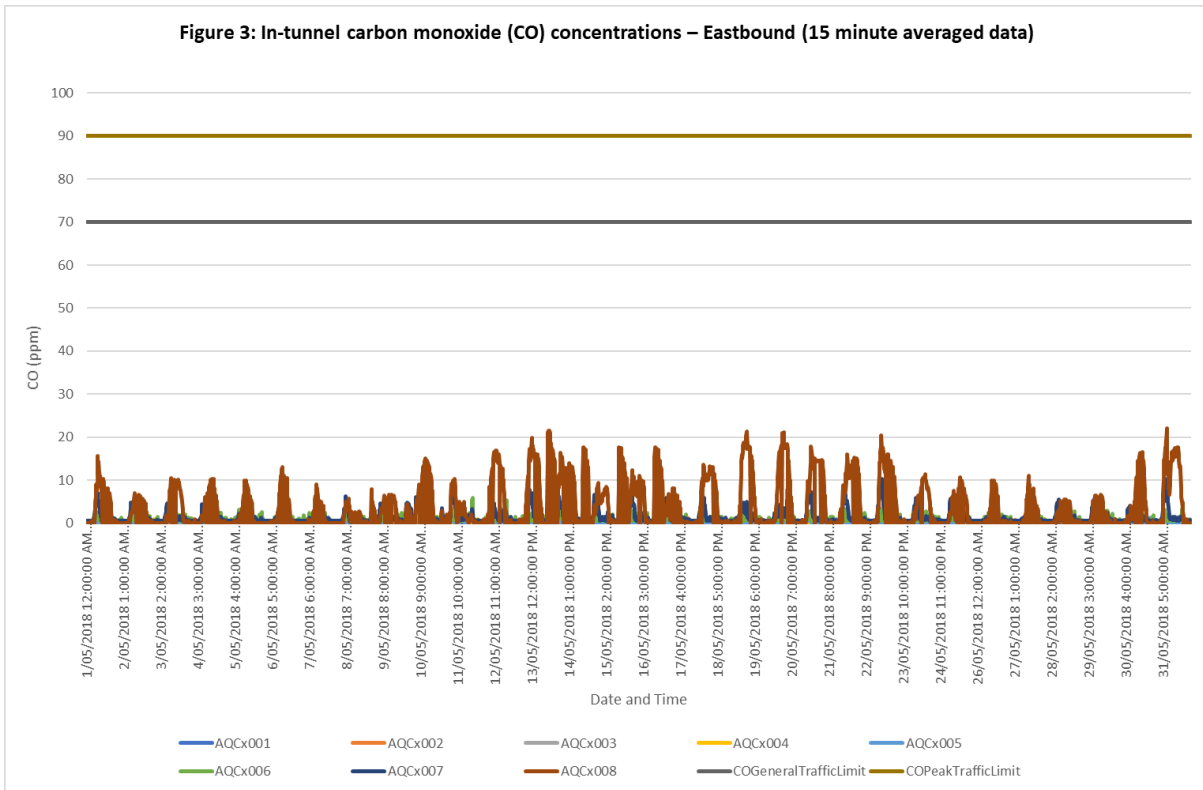
Notes:

1. Monitoring and measuring protocols for each criteria as set out in the PIARC guidelines, as current December 2009.
2. Peak traffic congestion occurs when traffic flows are less than 10 km/h
3. Visibility coefficient (K-value) may fluctuate with peak Conditions.

Visibility



Carbon monoxide



Nitrogen dioxide

