

# Legacy Way in-tunnel air quality

## Monthly trend report – March 2021

The table below sets out the in-tunnel air quality criteria for the Legacy Way tunnel as set out in the Environmental Authority (EPPR02587314). No notifiable trends were observed.

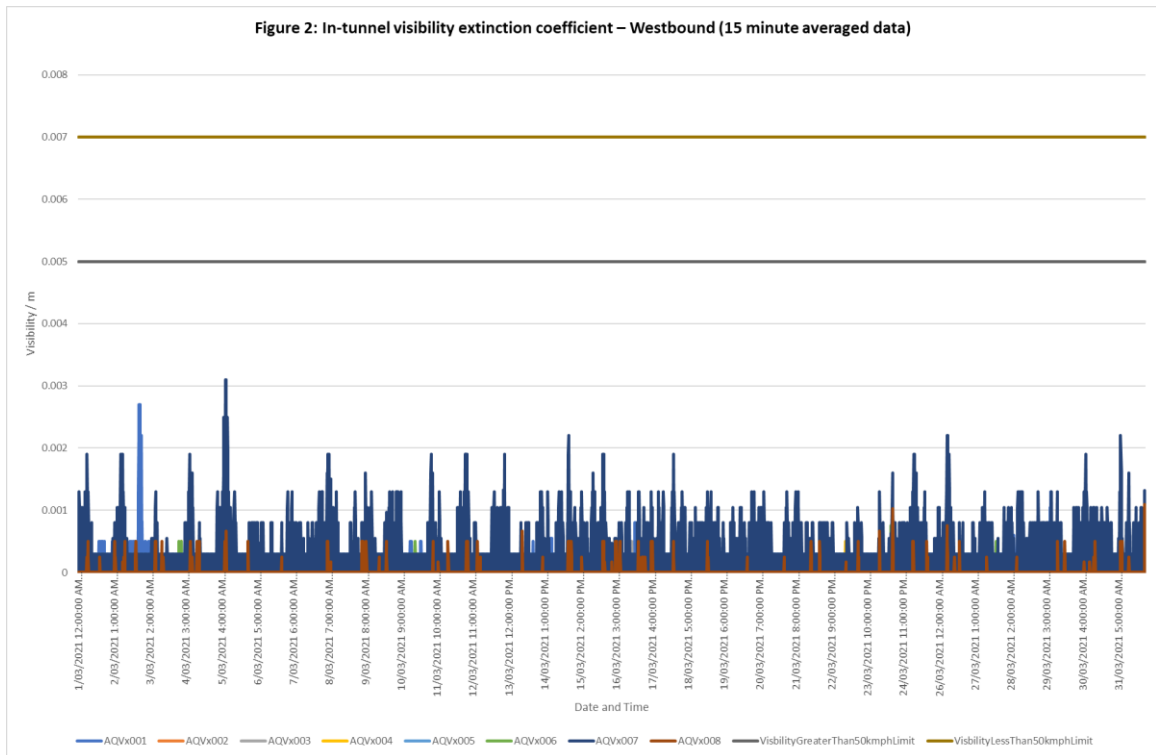
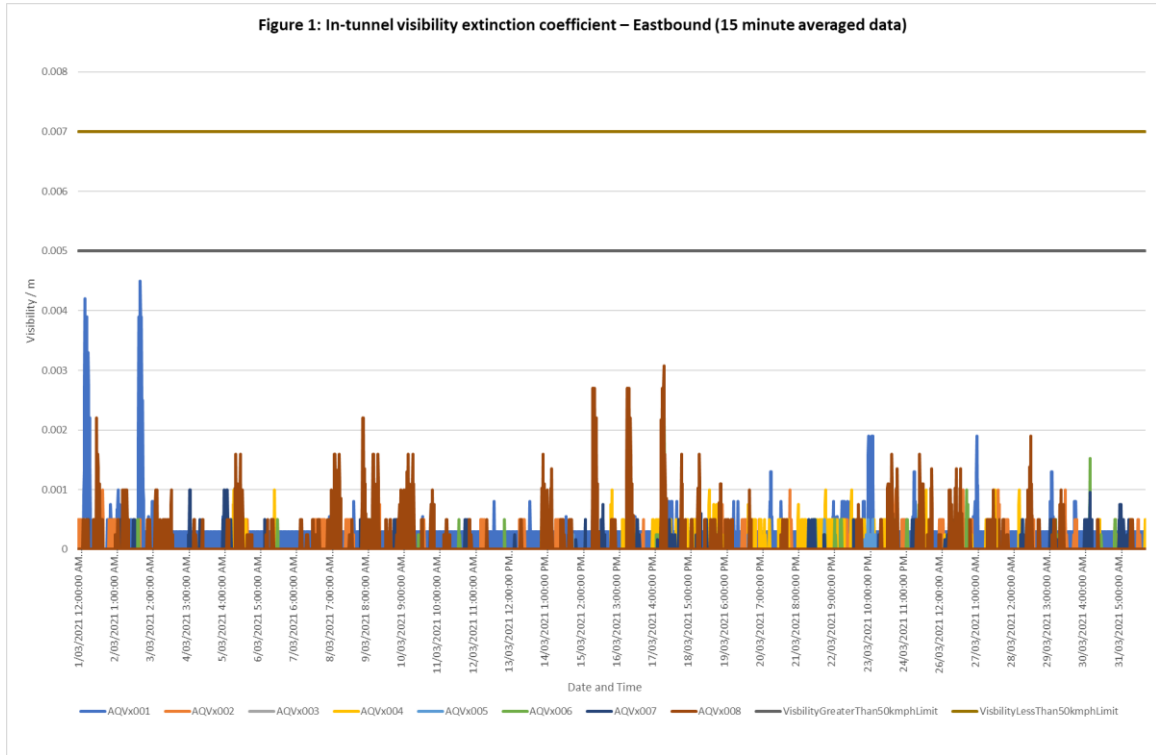
Table 1: In-tunnel air quality criteria

| Parameter                           | Criteria   |
|-------------------------------------|--|
| Carbon monoxide (CO)                | 70 ppm generally<br>90 ppm in peak traffic congestion  |
| Nitrogen dioxide (NO <sub>2</sub> ) | 1 ppm (average)  |
| Visibility coefficient (K)          | 0.005 m <sup>-1</sup> for free flowing traffic (greater than 50km/hr)<br>0.007 m <sup>-1</sup> otherwise |

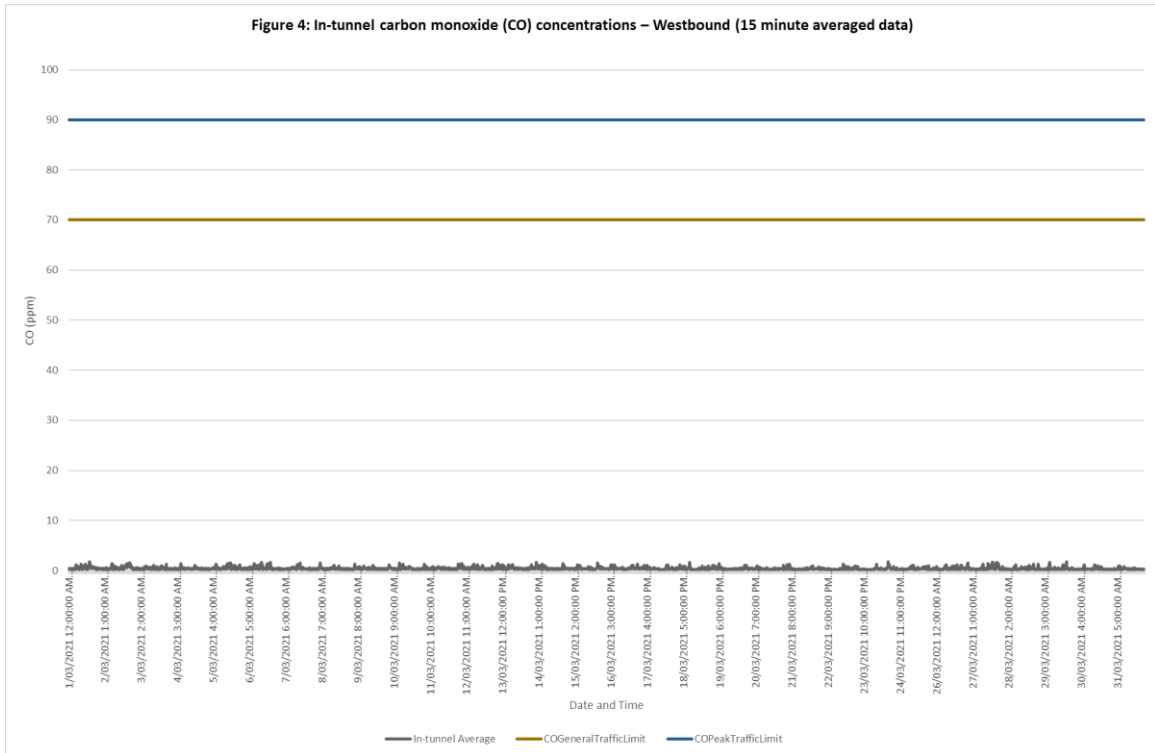
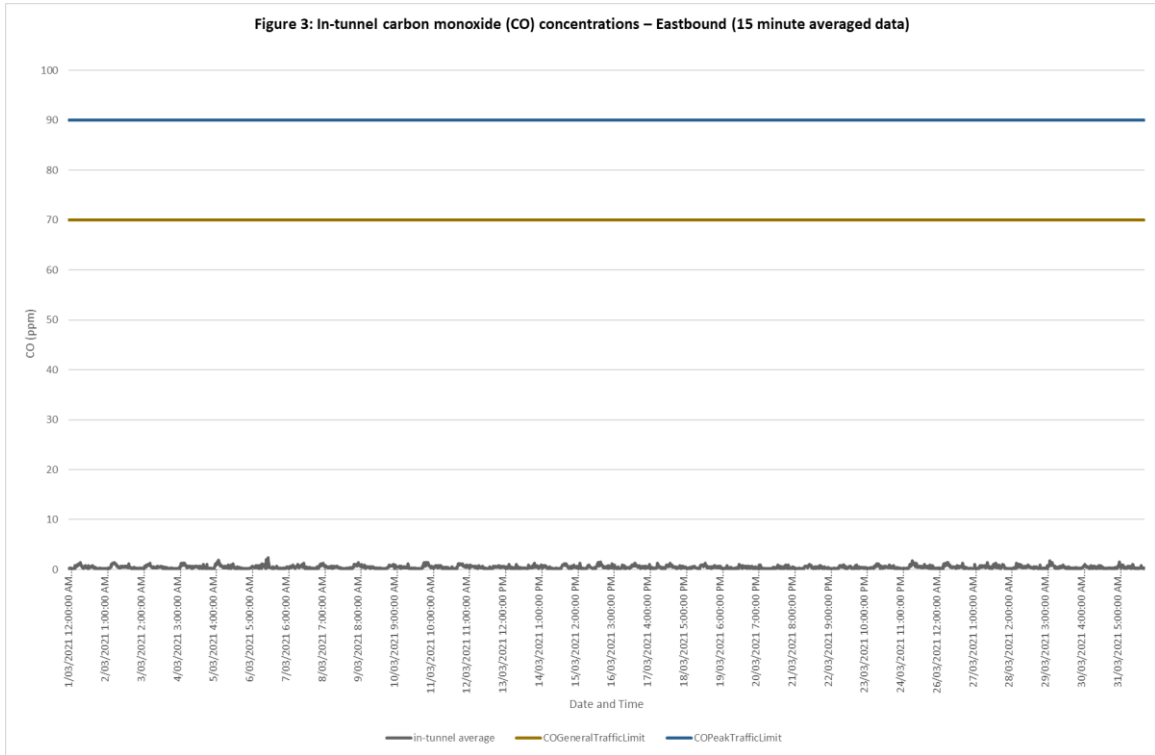
Notes:

1. Monitoring and measuring protocols for each criteria as set out in the PIARC guidelines, as current 2019.
2. Tunnel sensor average concentrations reported for Carbon Monoxide and Nitrogen Dioxide.
3. Peak traffic congestion occurs when traffic flows are less than 10 km/h.
4. Visibility coefficient (K-value) may fluctuate with peak conditions.

Visibility



Carbon monoxide



## Nitrogen dioxide

